

### Problematics

Stakes of the mobile office.

The fast growing expansion of the GSM and GPRS telecom networks eases the mobile office development. The mobile office development corresponds to the ability of the mobile communication tools to be carried on the various places where the profession is exerted.

This helps the organizations to optimize the working time of their mobile users who can invest the former wasted time in transports, airports, hotels... into work opportunities.

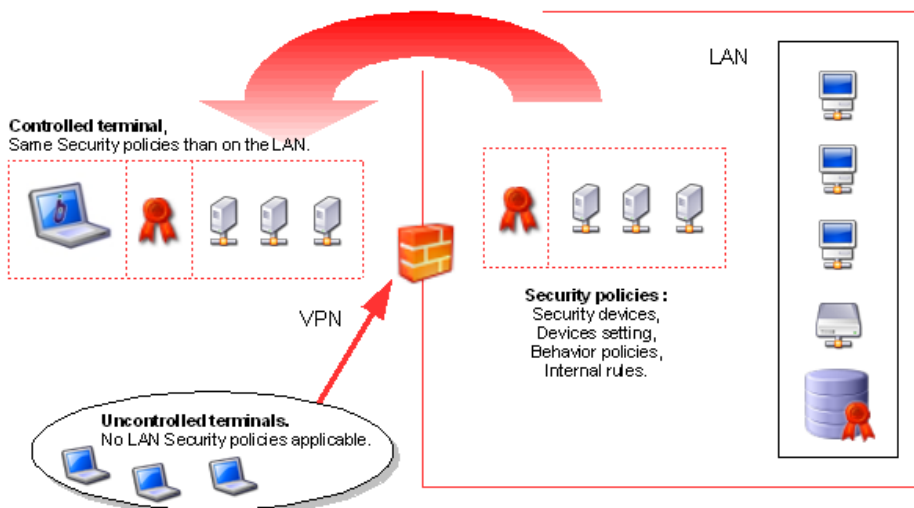
The mobile user can today retrieve the known office functionalities as the mobile environment does allow a perfect replication of the office environment; this compared to past times when mobile office was synonym of step by step data synchronization between the mobile devices and the fix environment.(e-mail remote loading, update of databases,..).

But the data exchanges under real time constraints between the office and an unspecified place are not without risk. The company policies in terms of mobile communication often consist of backing up the mobile device data and more and more an access via authentication is required to access the corporate network.

### Where are the competitive advantages...

The data protection is as crucial as the competitive advantages provided by the mobile office facilities are. The real stake does consist of providing the corporate users with mobile tools to get the advantages of the mobile office in guaranteeing a full protection of the data integrity for each connection of the mobile users.

The mobile office implementation within the company has to be risk free for the company IT network and for the entire company itself. The IT network is generally well protected but the today reality requests more than just an anti-virus protection; security experts and companies recommend today a firewall, a proxy, solutions to detect intrusions, the authentication, PKIs, VPNs, anti spamming, scanners of vulnerability, software filters, protocol analyzers, analyzers of behaviors, GPO and a lot of others....



The fundamental question of the mobile office is to define how to replicate under mobile constraints the whole of the fix security parameters and their respective roles for each mobile user.

Today the answer usually brought is very simple:

**“It is necessary to acquire and install the whole of the devices on each mobile device and make sure the latest (most recent) version is used”**

To get rid of this very uncertain procedure and simplify the process, Mobile Process has defined the exclusive concept of **Replicated LAN** and developed **MM-Server**, first product implementing this concept.

What is the **Replicated LAN**?

Today, the conscientious companies are protecting in an effective way their information system. They have a vast choice of technical solutions provided by computer security expert companies. The implementation as well as the way these technical solutions operate constitute the security policy of the company.

This security policy allows a use of the information in conformity with the internal operating rules of the company. The local area network (LAN) becomes a restricted and controlled area where the strategic and vital information of the company can circulate without risk.

The mobile office concept and its implementation do change this reality. The mobile users have also to access this strategic and vital information but from outside the restricted and controlled area. To simplify, the mobile users have to use the strategic information outside all the company operating rules and controls.

The concept of '**Replicated LAN**' of Mobile Process allows to extend this restricted and controlled area to the mobile user. The mobile user operates then in a mobile environment with the same rules and controls than the ones constituting of the local network of the company.

Contrary to the existing technologies (NAP or NAC types) which are used to make sure that the mobile entity usage respects some conditions before authorizing it to connect to the company network, the '**Replicated LAN**' ensures the mobile user to retrieve the office functionalities with the same level of security than in the office, allows the secured control of the usage of the strategic information of the company within the outer world.

The concept of '**Replicated LAN**' corresponds to the meeting point of three key principles:

- Protection of the corporate network
- Protection of the distant mobile entity.
- Replication of **all** the internal corporate security rules to the distant mobile device user, whether this user is connected or not.

**Once MM-Server** installed on a local network, it allows the straight replication for the mobile user of all the resources and the applicable rules within the company.

**Keep control of what your mobile users do !**

***Don't be satisfied protecting only your local area network but ensure your mobile users get the benefit of the corporate functionalities and the strategic information with the same level of security than the one of the local area network, preventing them to use this information the way they want !***